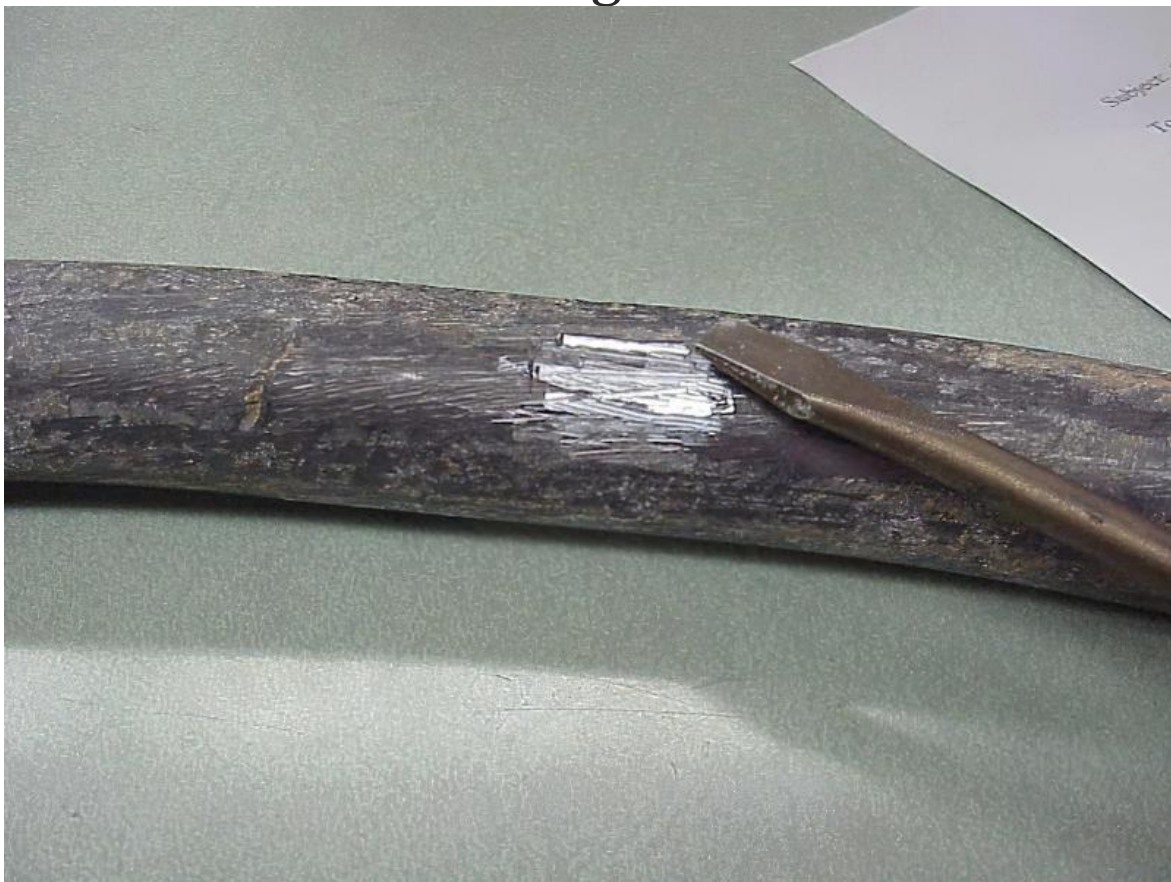


Dear Valued Customer:

On December 16, 2021, the Environmental Protection Agency, EPA developed new rules for the control of Lead and Copper in portable water. As a result of this action the Rocky Top Water System is required to complete a Lead Service Line Inventory (LSLI) prior to October 16, 2024. This LSLI will have to include an investigation of service line material for both the system owned side and customer owned side of service lines installed before July 1988.

Please click on the link at the bottom of the page to fill out and submit the survey.

Understanding the Concern



Lead and Your Health

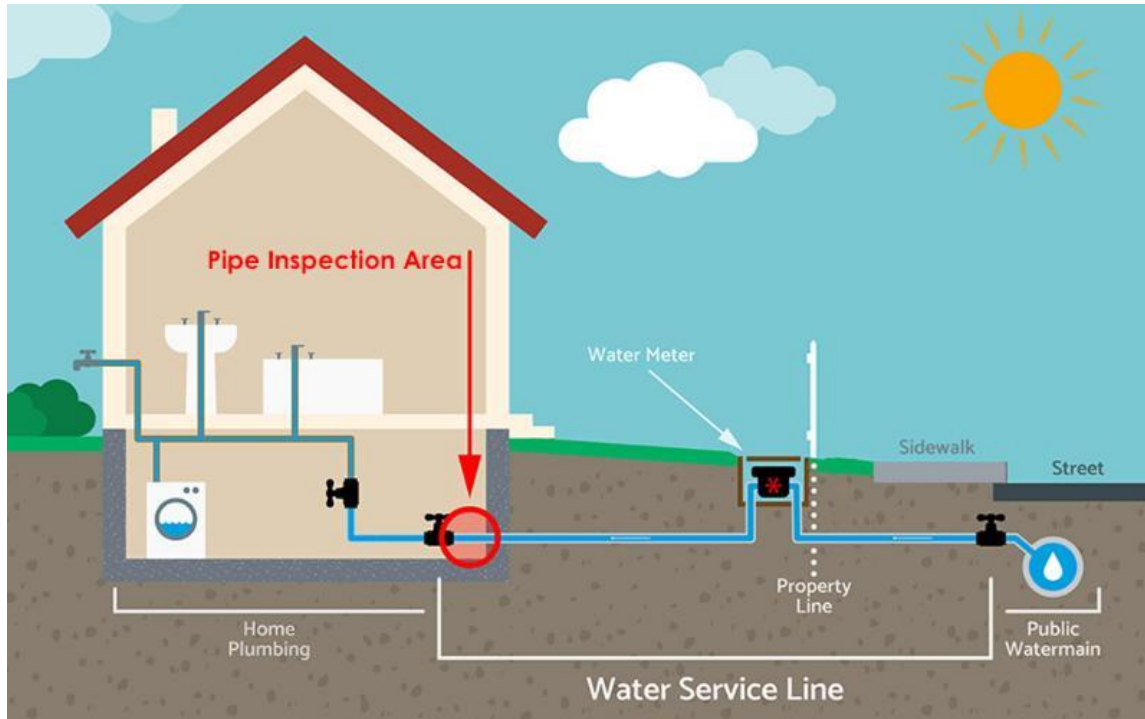
Why is lead a concern?

Lead can affect almost every organ and system in your body. Young children and infants are particularly vulnerable to lead. A dose of lead that would have little effect on an adult can have a significant effect on a child.

How does lead get into drinking water?

Lead can enter drinking water when pipes and plumbing fixtures that contain lead corrode, especially where the water has high acidity or low mineral content.

[Learn more](#)



What is a service line?

The service line connects the water main to the property. The water utility company owns the utility portion of the service line, from the street to the water meter. The customer owns the service line from the water meter to the residence.

We need your help to identify what material line serves your home or business. Use the link below to fill out a brief survey regarding the water service line material in your home.

[Water Service Line Material Survey](#)